

# Identification Key to Campbell Island Freshwater Chironomidae Larvae

McMurtrie, Sinton & Winterbourn (2014)



## *Eukiefferiella heveli* Sublette & Wirth, 1980 INFORMATION SHEET

### Classification

Class:	Insecta
Order:	Diptera
Family:	Chironomidae
Subfamily:	Orthocladiinae
Genus:	<i>Eukiefferiella</i>
Specific name:	<i>heveli</i>
<b>Common name:</b>	midge

### Distinguishing Features

- Body grey-green (Fig. 1); head dark, narrowing anteriorly when viewed dorsally; a narrow, dark occipital band, posteriorly (Fig. 2); eye dark, surrounded by a pale patch (Fig. 2); body length up to 3.3 mm.
- Mentum steep-sided, roughly triangular with longitudinal striations; median tooth strongly bifid; 5 pairs of lateral teeth (Fig. 3).
- Antenna 4-segmented, about as long as the mandibles; two blades on segment 2 reaching to the base of segment 3 (Fig. 4).

### Comments

The adult and larva were described by Sublette & Wirth (1980). Freshwater samples collected during the 2010–11 Campbell Island Bicentennial Expedition contained larvae, adults and pupae, some of which had fully developed male genitalia and showed the adult character of hairs between the eye facets well. Pupae were 2.0–2.2 mm long with thread-like respiratory siphons that are slightly curved and expanded into a broad cone, basally.



FIGURE 1. *Eukiefferiella heveli* whole animal



FIGURE 2. *Eukiefferiella heveli* head

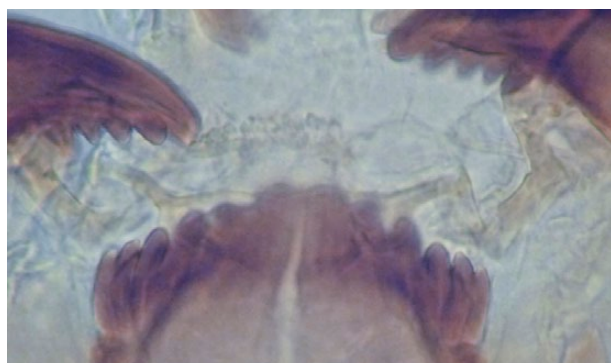


FIGURE 3. *Eukiefferiella heveli* mentum

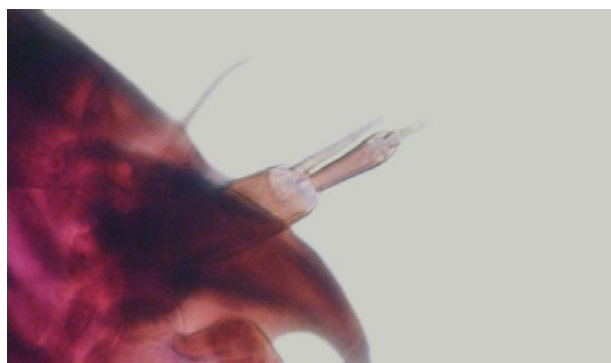
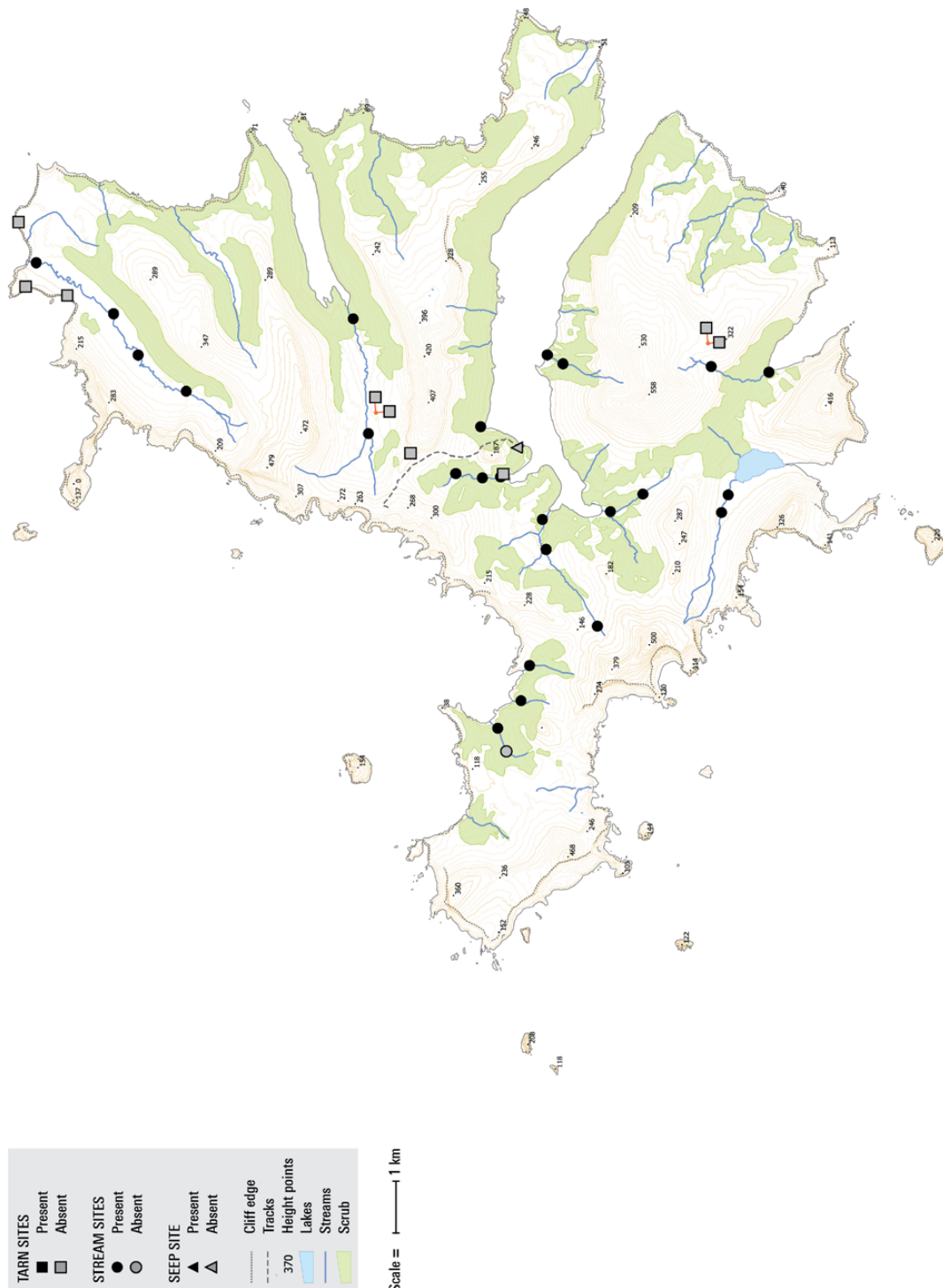


FIGURE 4. *Eukiefferiella heveli* antenna

## Biogeographic Information

Presence/absence on streams, tarns, and a seepage sampled on Campbell Island.

Distribution map based on surveys undertaken by EOS Ecology during the 2010–11 Campbell Island Bicentennial Expedition ([www.campbellisland.org.nz](http://www.campbellisland.org.nz)). Distribution data © EOS Ecology, 2013.



## Original Description

The following is a direct excerpt of the larval stage from Sublette & Wirth (1980), including figures:

Larva (presumptively associated). Head capsule dark brown; occipital ring blackish; eye spots contiguous, surrounded by a narrow paler area. Ventral head length 0.163 mm. Labial plate, Fig. 16C and 17J. Antenna, Fig. 16D,E. Ventral labral structures, Fig. 17F and 18A. Maxillary palpus, Fig. 18B. Mandible, Fig. 17K.

Anterior prolegs stalked, with pectinate claws (Fig. 18C). Posterior prolegs with 11 smooth claws (Fig. 18E). Prenatal papillae about as high as wide (Fig. 18D), each with 7 long terminal setae and 1 shorter setae on anterior face.

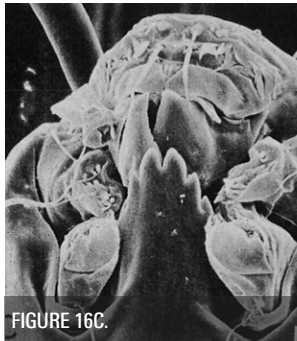


FIGURE 16C.

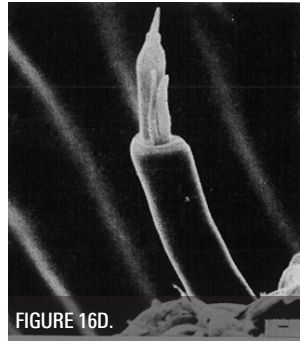


FIGURE 16D.

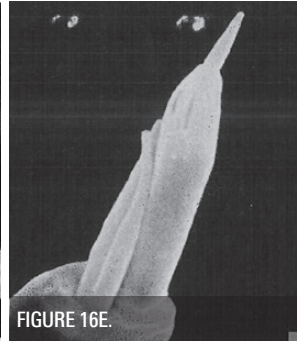


FIGURE 16E.



FIGURE 17F.



FIGURE 17J.



FIGURE 17K.

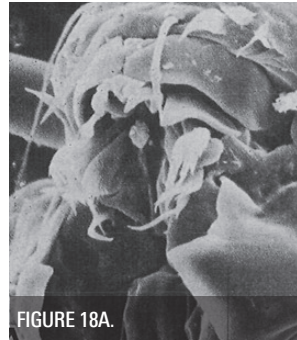


FIGURE 18A.

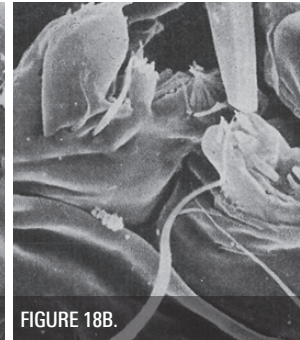


FIGURE 18B.

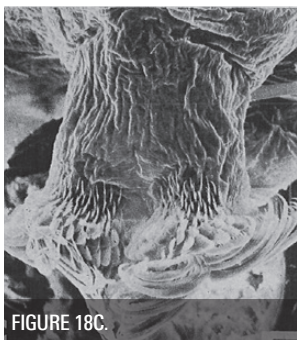


FIGURE 18C.

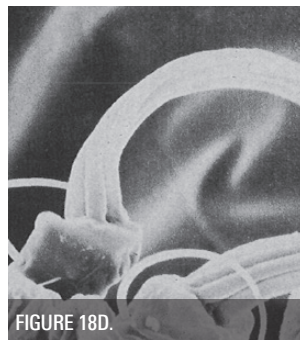


FIGURE 18D.

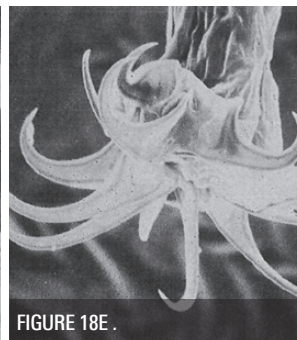


FIGURE 18E.

## References & Further Reading

Sublette, J. E. & Wirth, W. W. 1980. The Chironomidae and Ceratopogonidae (Diptera) of New Zealand's subantarctic islands. *New Zealand Journal of Zoology* 7: 299–378.

## How to Cite this Information Sheet

McMurtrie, S.A., Sinton, A.M.R., & Winterbourn, M.J. 2014. Lucid Identification Key to Campbell Island Freshwater Chironomidae Larvae: *Eukiefferiella heveli* information sheet. EOS Ecology, Christchurch, New Zealand.

**ACKNOWLEDGEMENTS** – The creation of the Lucid Key and information sheets were supported by the TFBIS (Terrestrial and Freshwater Biodiversity Information System) Fund administered by the Department of Conservation (TFBIS Contract No. 278), and by EOS Ecology. Invertebrate specimens were collected by EOS Ecology during the 2010–11 Campbell Island Bicentennial Expedition (CIBE), made possible by the 50° South Trust.

