

Hevelius carinatus Sublette & Wirth, 1980 INFORMATION SHEET

Classification

Class: Insecta
Order: Diptera
Family: Chironomidae
Subfamily: Orthocladiinae
Genus: *Hevelius*
Specific name: *carinatus*
Common name: midge

Distinguishing Features

- Body greenish-grey; head medium brown; eye black, prominent; mouthparts dark and appearing “plate-like” under a dissecting microscope; body length up to 2.5 mm (Fig. 1 and 2).
- Mentum with a single median tooth and 5 lateral teeth; sides of mentum shallowly concave alongside the premental plates; a second set of “square” premental plates appear to be present at the base of the mentum.
- Premandibles with a slight indication of being bifid.
- Antennae 5-segmented, the third segment very short; a blade reaches beyond the tip of the antenna (Fig. 3).
- Prothoracic and posterior prolegs fairly short, the latter with dark claws.
- Procercal hairs short.

Comments

Sublette & Wirth (1980) provided a short description of the larva of *H. carinatus* and provided a large number of illustrations, mainly scanning electron microscope images. Our material differs from their material only in the antennal blade being shorter than shown by them. They did not state the size of the larva but a body length of 2.5 mm is consistent with the small size of the adult.



FIGURE 1. *Hevelius carinatus* whole animal



FIGURE 2. *Hevelius carinatus* head

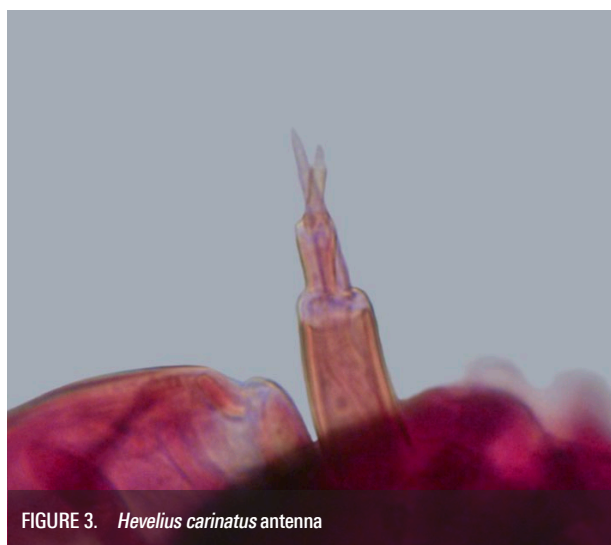
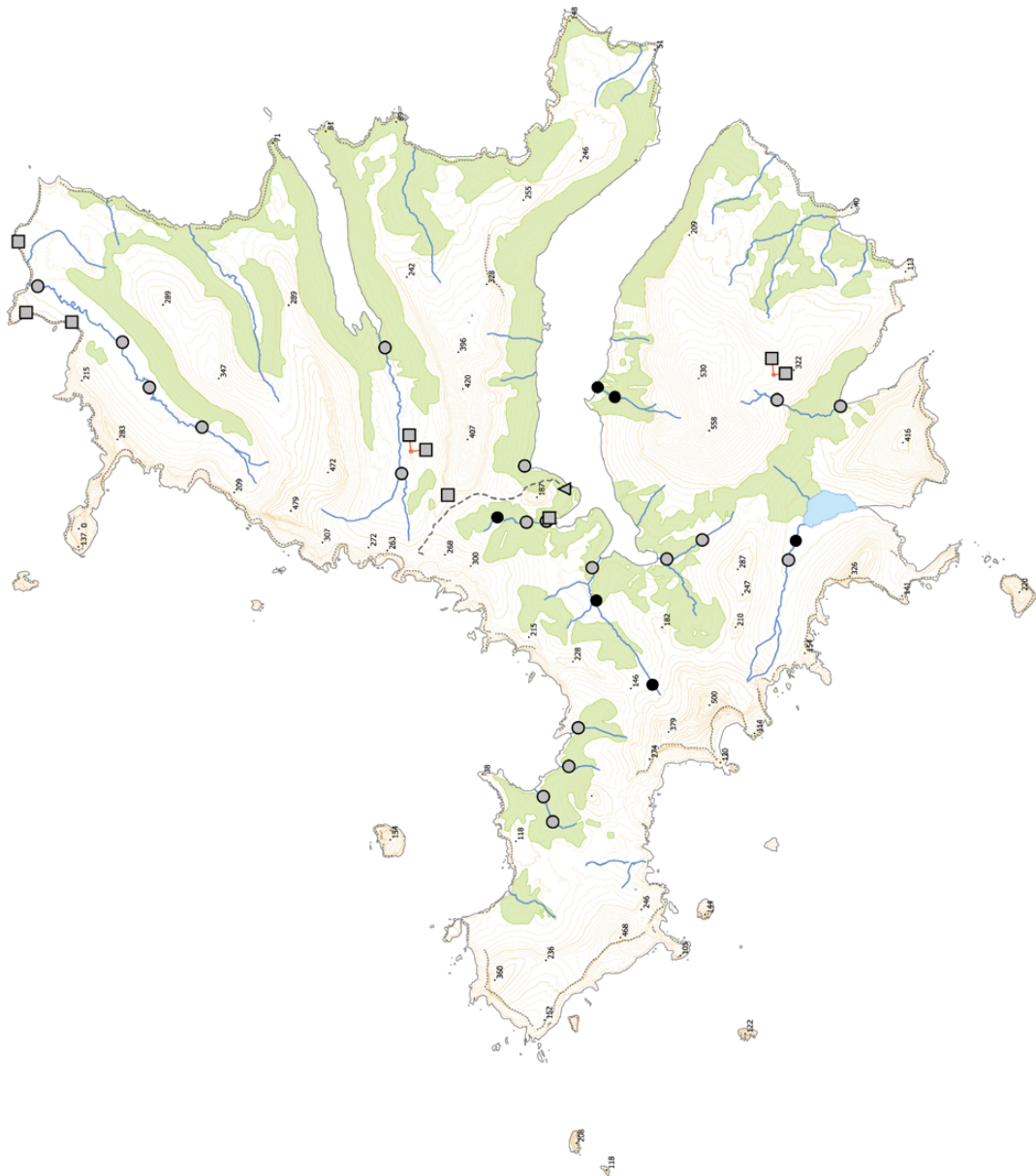


FIGURE 3. *Hevelius carinatus* antenna

Biogeographic Information

Presence/absence on streams, tarns, and a seepage sampled on Campbell Island.

Distribution map based on surveys undertaken by EOS Ecology during the 2010–11 Campbell Island Bicentennial Expedition (www.campbellisland.org.nz). Distribution data © EOS Ecology, 2013.



TARN SITES	Present
■	Absent
STREAM SITES	Present
●	Absent
SEEP SITE	Present
▲	Absent
⋯	Cliff edge
—	Tracks
▲	Height points
○	Lakes
—	Streams
■	Scrub

Scale = 1 km

New Zealand Transverse Mercator
New Zealand Geodetic 2000
Created on: 3 December 2013
Created by: Kirsty Brennan

Hevelius carinatus Distribution
CAMPBELL ISLAND
December 2010–February 2011

Produced by: EOS Ecology
Project name: Campbell Island Bicentennial Expedition
Project no.: 06033-EOS01
Project lead: Shelley McMurtrie
www.eosecology.co.nz

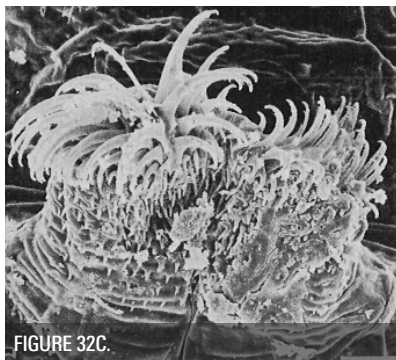
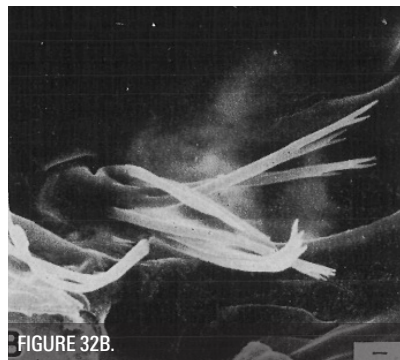
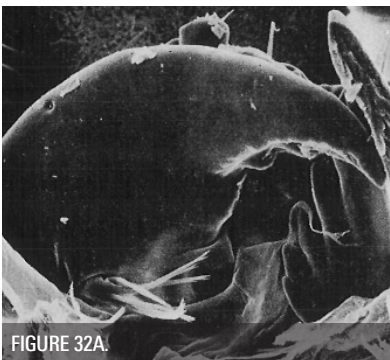
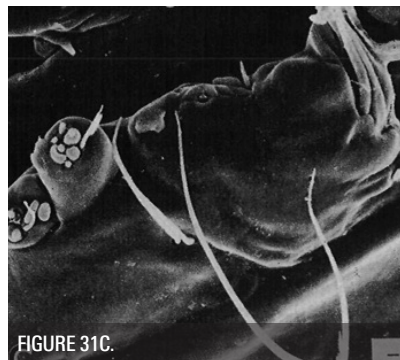
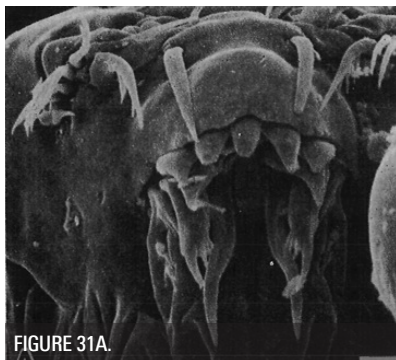
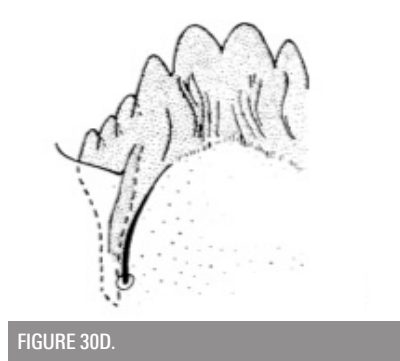
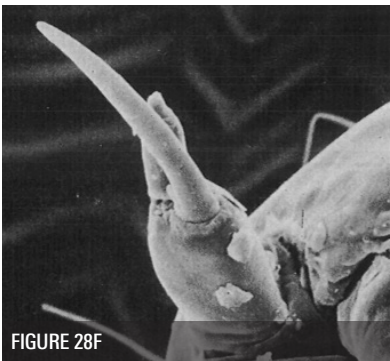
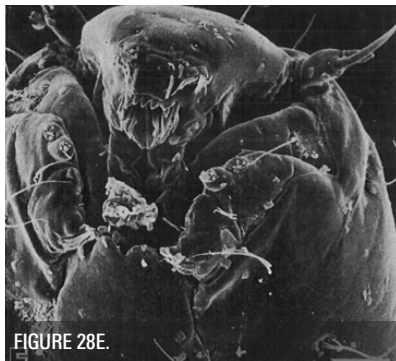


Original Description

The following is a direct excerpt for the larval stage from Sublette & Wirth (1980), including figures:

Larva (presumptively associated—collected from water in an old basin where adult males of this species were also collected). Head capsule dark brown, with a black occipital border; eye spots single; anterior aspect of head, Fig. 28E; ventral head length 0.158-0.163 mm (3). Labial plate, Fig. 30D. Antenna, Fig. 28F. Ventral labral structures, Fig. 31A,B; premandibles bifurcate at tip. Maxilla, Fig. 31C. Mandible, Fig. 31E and 32A,B.

Anterior prolegs reduced, with short dark, almost straight hooks (Fig. 32C). Body segments with reduced, sparse setae. Posterior prolegs short, completely retractile, each with 9 short, dark claws (Fig. 32D). Preanal papillae lacking. One pair of short anal gills.



References & Further Reading

Sublette, J. E. & Wirth, W. W. 1980. The Chironomidae and Ceratopogonidae (Diptera) of New Zealand's subantarctic islands. *New Zealand Journal of Zoology* 7: 299–378.

How to Cite this Information Sheet

McMurtrie, S.A., Sinton, A.M.R., & Winterbourn, M.J. 2014. Lucid Identification Key to Campbell Island Freshwater Chironomidae Larvae: *Hevelius carinatus* information sheet. EOS Ecology, Christchurch, New Zealand.

ACKNOWLEDGEMENTS – The creation of the Lucid Key and information sheets were supported by the TFBIS (Terrestrial and Freshwater Biodiversity Information System) Fund administered by the Department of Conservation (TFBIS Contract No. 278), and by EOS Ecology. Invertebrate specimens were collected by EOS Ecology during the 2010–11 Campbell Island Bicentennial Expedition (CIBE), made possible by the 50° South Trust.

