

## *Maoridiamesa insularis* Brundin, 1966 INFORMATION SHEET

### Classification

Class:	Insecta
Order:	Diptera
Family:	Chironomidae
Subfamily:	Diamesinae
Genus:	<i>Maoridiamesa</i>
Specific name:	<i>insularis</i>
<b>Common name:</b>	midge

### Distinguishing Features

- Body moderately robust with a greenish tinge (Fig. 1); head orange-brown with a broad black collar, posteriorly (Fig. 2); eye black, almost round and surrounded by a variably shaped pale patch; mouthparts darkly pigmented making details difficult to see; body length up to 11 mm.
- Mentum rounded anteriorly with a single median tooth, large first lateral teeth and much shorter second laterals (Fig. 10C in Sublette & Wirth, 1980).
- Densely setose hypopharynx extending anterior to mentum (Fig. 10C in Sublette & Wirth, 1980).
- Antennae 5-segmented, orange-brown, a little longer than the maximum width of the collar; Lauterborn organs on antennal segment 3; blade on segment 2 reaching to the base of segment 5; a shorter blade extends to the end of segment 3; ring organ near the base of segment 1 (Fig. 4).

### Comments

Sublette & Wirth (1980) described the adult and larva (including a large number of scanning electron microscope images) but not the pupa. Pupae we have found are dark-coloured and have filamentous, slightly tapering respiratory siphons on the thorax. The posterior end of the pupa is rounded with very short projections. *M. insularis* is known only from Campbell Island.



FIGURE 1. *Maoridiamesa insularis* whole animal

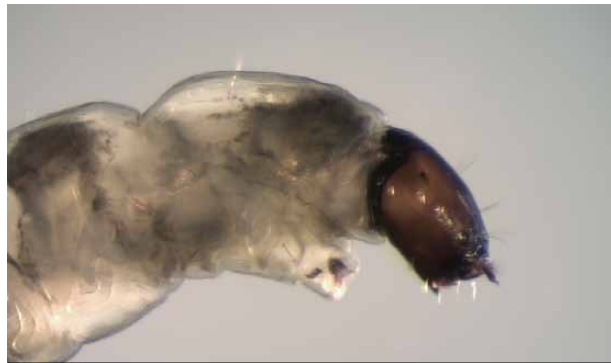


FIGURE 2. *Maoridiamesa insularis* anterior



FIGURE 3. *Maoridiamesa insularis* posterior

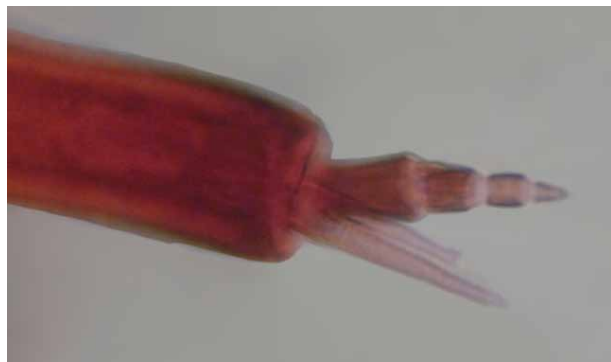
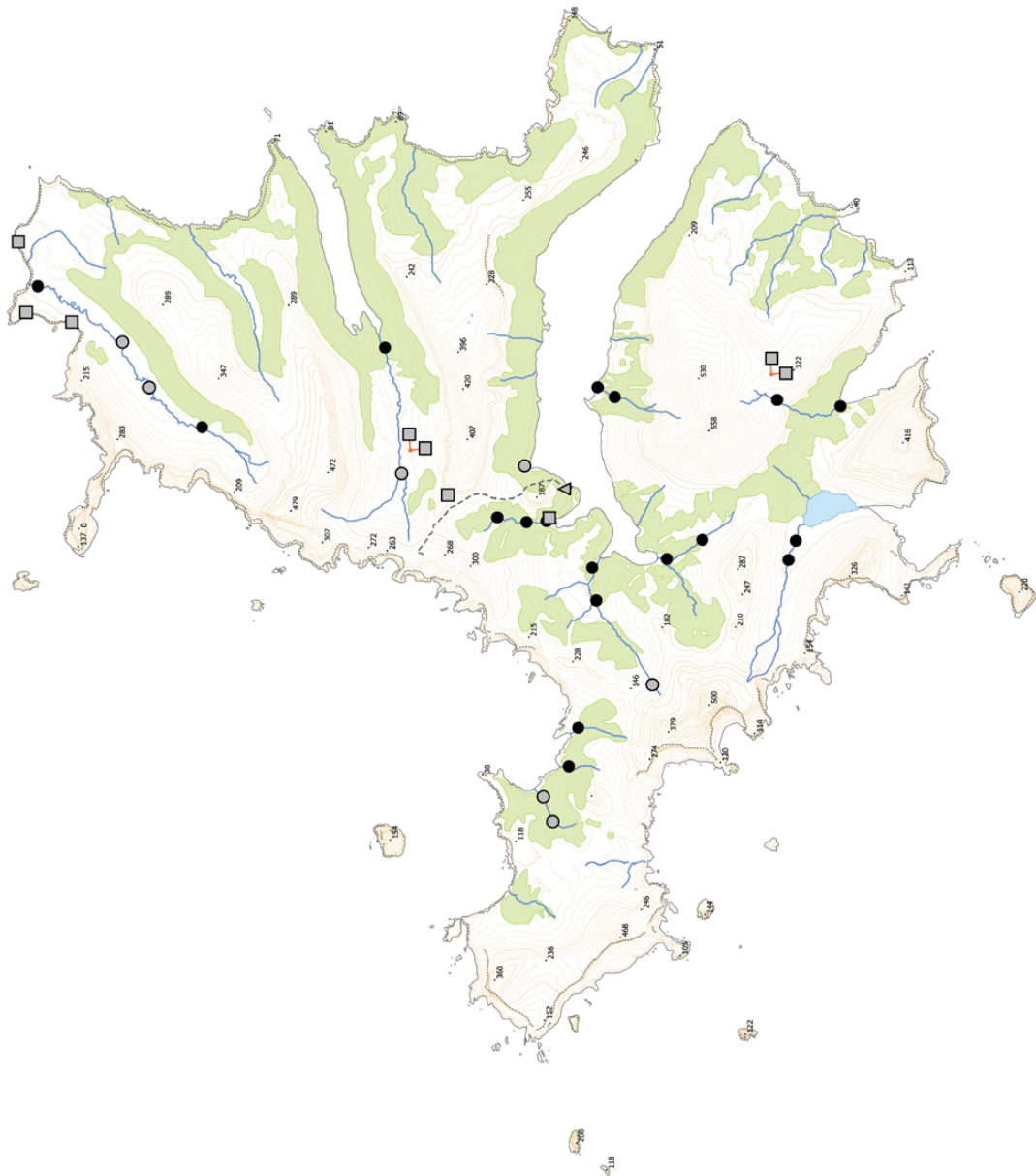


FIGURE 4. *Maoridiamesa insularis* antenna

## Biogeographic Information

Presence/absence on streams, tarns, and a seepage sampled on Campbell Island.

Distribution map based on surveys undertaken by EOS Ecology during the 2010–11 Campbell Island Bicentennial Expedition ([www.campbellisland.org.nz](http://www.campbellisland.org.nz)). Distribution data © EOS Ecology, 2013.



<b>TARN SITES</b>	Present
■	Absent
<b>STREAM SITES</b>	Present
●	Absent
<b>SEEP SITE</b>	Present
▲	Absent
⋯	Cliff edge
—	Tracks
▲	Height points
○	Lakes
—	Streams
■	Scrub

Scale = 1 km

New Zealand Transverse Mercator  
New Zealand Geodetic 2000  
Created on: 3 December 2013  
Created by: Kirsty Brennan

**Maoriidamesa insularis Distribution**  
**CAMPBELL ISLAND**  
December 2010–February 2011

Produced by: EOS Ecology  
Project name: Campbell Island Bicentennial Expedition  
Project no.: 06033-EOS01  
Project lead: Shelley McMurtrie  
[www.eosecology.co.nz](http://www.eosecology.co.nz)



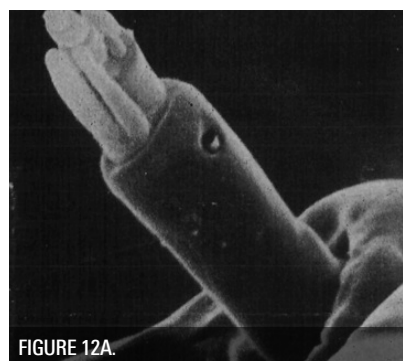
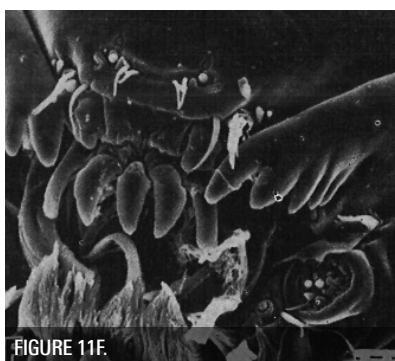
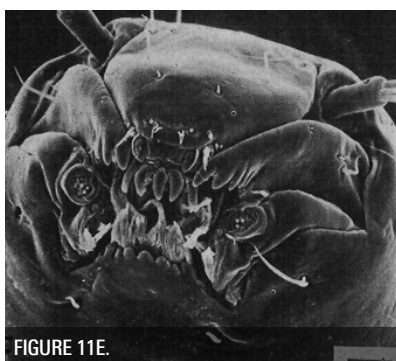
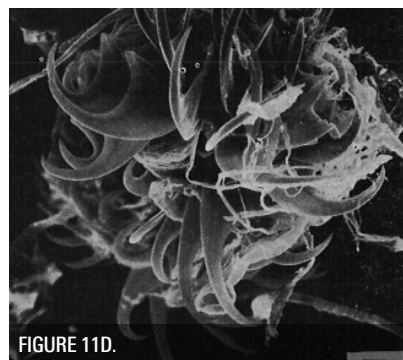
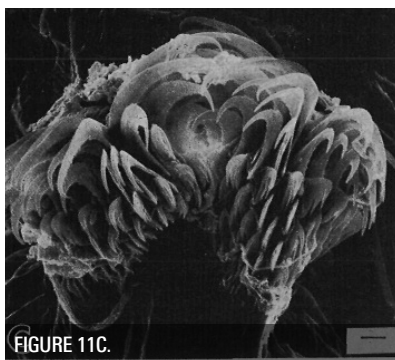
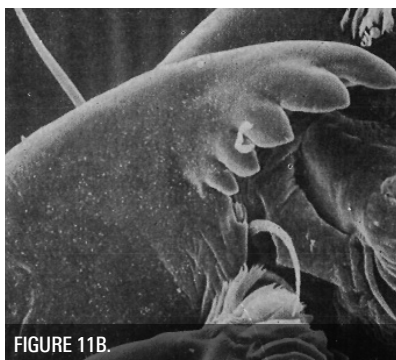
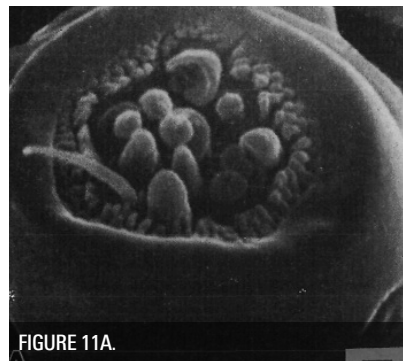
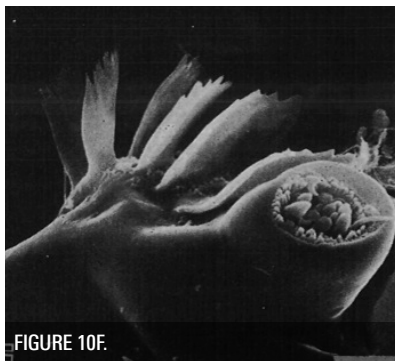
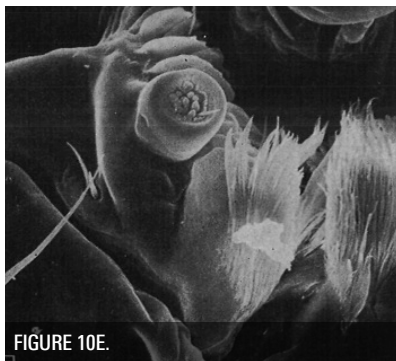
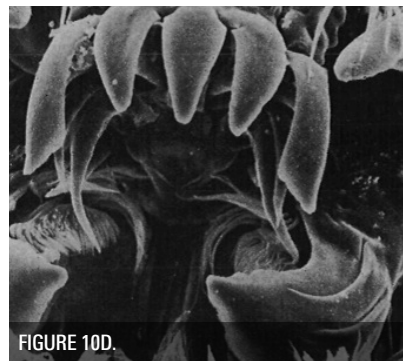
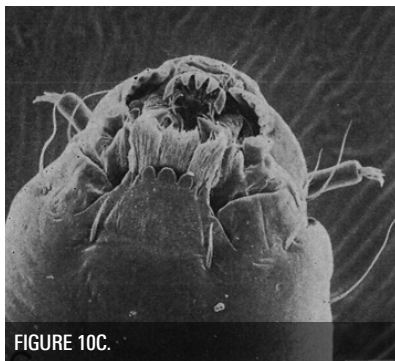
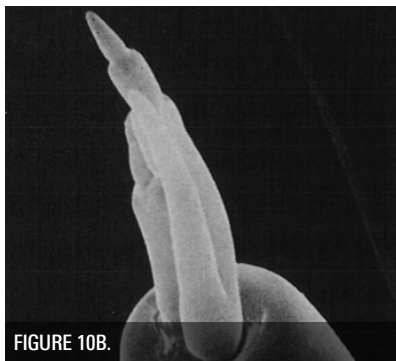
## Original Description

Brundin (1966): Larvae not described.

The following is a direct excerpt of the larval description from Sublette & Wirth (1980), including figures:

Larva. Fourth instar. Head capsule dark brown, with labial plate, mandible tip, and occipital ring blackish. Eye spots contiguous. Ventral head length 0.31 mm. Ventral view of head, Fig. 10C; oral field (enlarged), Fig. 10D. Labial plate, Fig. 10C and 13A. Antenna, Fig. 10B. Maxilla, Fig. 10E,F. Maxillary palpus, Fig. 11A. Mandible, Fig. 11B. Anterior prolegs, Fig. 11C. Each posterior proleg with about 18 blackish claws (Fig. 11D). Preanal papillae dark, about twice as wide as high, each with 1 short seta on anterior face and 6 long, terminal black setae.

Third instar. Ventral head length 0.22 mm. Anterolateral view of head, Fig. 11E; mouthpart details, Fig. 11F. Labial plate, Fig. 13B. Antenna, Fig. 12A. Maxilla, Fig. 12B. Prolegs and preanal papilla similar to those of 4th instar.



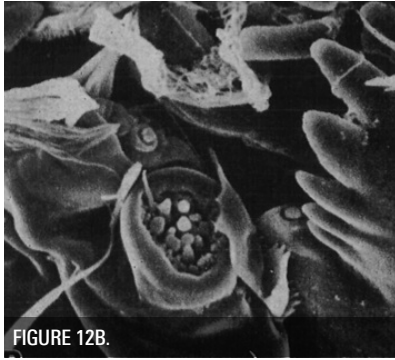


FIGURE 12B.



FIGURE 13A.



FIGURE 13B.

## References & Further Reading

Brundin, L. 1966. Transantarctic relationships and their significance as evidenced by chironomid midges. *Kungl. Svenska Vetenskapsakademiens Handlingar* 11 (1): 1–472.

Sublette, J. E. & Wirth, W. W. 1980. The Chironomidae and Ceratopogonidae (Diptera) of New Zealand's subantarctic islands. *New Zealand Journal of Zoology* 7: 299–378.

## How to Cite this Information Sheet

McMurtrie, S.A., Sinton, A.M.R., & Winterbourn, M.J. 2014. Lucid Identification Key to Campbell Island Freshwater Chironomidae Larvae: *Maoridiamesa insularis* information sheet. EOS Ecology, Christchurch, New Zealand.

ACKNOWLEDGEMENTS – The creation of the Lucid Key and information sheets were supported by the TFBIS (Terrestrial and Freshwater Biodiversity Information System) Fund administered by the Department of Conservation (TFBIS Contract No. 278), and by EOS Ecology. Invertebrate specimens were collected by EOS Ecology during the 2010–11 Campbell Island Bicentennial Expedition (CIBE), made possible by the 50° South Trust.

