

# Identification Key to Campbell Island Freshwater Invertebrates

McMurtrie, Sinton & Winterbourn (2014)



## Ostracoda INFORMATION SHEET

### Classification

Subphylum:	Crustacea
Class:	Ostracoda
Order:	Myodocopida
Family:	Cypridinidae
Common name:	seed shrimp, ostracod

### Distinguishing Features

#### Type 1 (?*Eucypris*)

- Valves greyish-green, about 2x as long as high; dorsally rounded, the greatest height at about mid length (Fig. 1). Ventral margin shallowly concave. Prominent warts, variably distributed on different individuals present on the valves, particularly on their anterior halves (Fig. 2). The valves have the general shape of those of *Eucypris pratensis*, figured by Chapman *et al.* (2011).
- Antennae with swimming setae; legs 3-segmented, the second pair with very long claws.
- Body length 0.8 mm.

#### Type 2

- Valves white, speckled with black; less than 2x as long as high; dorsal surface smoothly rounded.
- Antennae without swimming hairs.
- Second walking legs with a moderately curved claw.
- Body length up to 0.8 mm.

### Comments

No ostracods have been officially described from Campbell Island. However, two species of Cyprinididae have been found on Macquarie Island, including a *Eucypris* species (Greenslade 2006).

**Type 1 (?*Eucypris*):** The *Eucypris* species from Macquarie Island was identified as *E. virens* Jurine (Greenslade, 2006). In her brief description of the species Greenslade notes that “wart-like protuberances” were present near the anterior margins of the valves, and that *E. virens* is parthenogenetic. *E. virens* has also been recorded from Kerguelen Island. Other *Eucypris* species reported from Subantarctic islands are *E. corpulenta* (G. O. Sars) (Kerguelen Island) and *E. fontana* (Graf) (South Orkney and South Georgia islands) (Pugh *et al.*, 2002).

**Type 2:** Material of this small species collected during the 2010–11 Campbell Island Bicentennial Expedition was difficult to examine as specimens were not well preserved. *Candona* and *Paracypris* are genera containing small white species with antennae lacking swimming hairs and the Campbell Island species may belong in one of them. Another small, rounded species *Cyprretta* cf. *seurati* Gauthier has been found on Macquarie Island (Pugh *et al.* 2002).



FIGURE 1. Ostracoda Type 1 (?*Eucypris*)

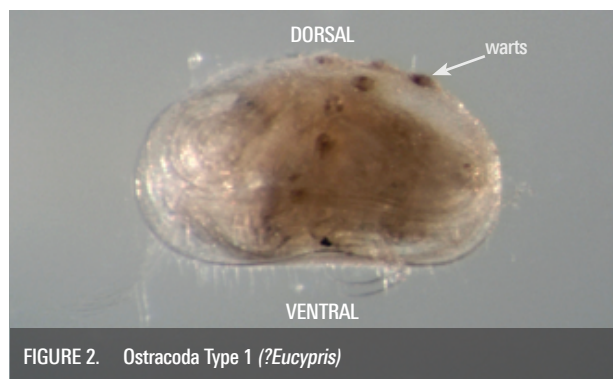


FIGURE 2. Ostracoda Type 1 (?*Eucypris*)

### Original Description

N/A

### References & Further Reading

- Chapman, M.A., Lewis, M.H. & Winterbourn, M.J. 2011. *Guide to the freshwater Crustacea of New Zealand*. New Zealand Freshwater Sciences Society, Christchurch.
- Greenslade, P. 2006. The invertebrates of Macquarie Island. Australian Antarctic Division, Tasmania, Australia.
- Pugh, P.J.A., Dartnall, H.J.G. & McInnes, S.J. 2002. The non-marine Crustacea of Antarctica and the islands of the Southern Ocean: biodiversity and biogeography. *Journal of Natural History* 36: 1047–1103

### How to Cite this Information Sheet

McMurtrie, S.A., Sinton, A.M.R., & Winterbourn, M.J. 2014. Lucid Identification Key to Campbell Island Freshwater Invertebrates: Ostracoda information sheet. EOS Ecology, Christchurch, New Zealand.

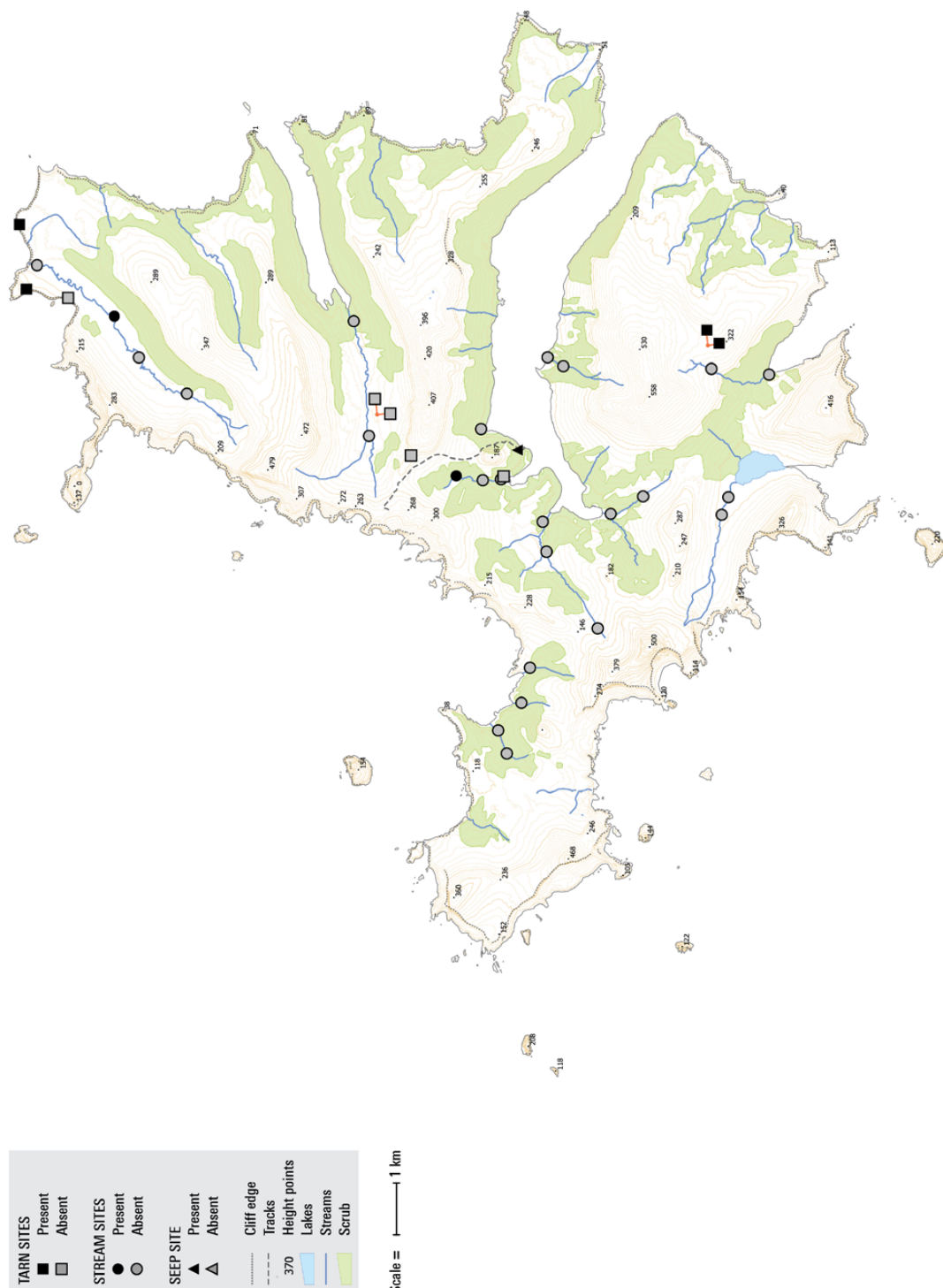
**ACKNOWLEDGEMENTS** – The creation of the Lucid Key and information sheets were supported by the TFBIS (Terrestrial and Freshwater Biodiversity Information System) Fund administered by the Department of Conservation (TFBIS Contract No. 278), and by EOS Ecology. Invertebrate specimens were collected by EOS Ecology during the 2010–11 Campbell Island Bicentennial Expedition (CIBE), made possible by the 50° South Trust. Thanks to Patrick De Deckker for his assistance and contribution to this information sheet.



## Biogeographic Information

Presence/absence on streams, tarns, and a seepage sampled on Campbell Island.

Distribution map based on surveys undertaken by EOS Ecology during the 2010–11 Campbell Island Bicentennial Expedition ([www.campbellisland.org.nz](http://www.campbellisland.org.nz)). Distribution data © EOS Ecology, 2013.



New Zealand Transverse Mercator  
 New Zealand Geodetic 2000  
 Created on: 3 December 2013  
 Created by: Kirsty Brennan

Ostracoda Distribution  
**CAMPBELL ISLAND**  
 December 2010–February 2011

EOS Ecology  
 Campbell Island Bicentennial Expedition  
 Project name: 06033-EOS01  
 Project no.: Shelley McMurtrie  
 Project lead: [www.eosecology.co.nz](http://www.eosecology.co.nz)